

## Actual Size Template (Side 4)

# The Well-Dressed Dog



- <N> Coat—1 Back bodice, 2 Facing, 3 Top collar, 4 Under collar, 5 Tab
- <O> Quilted Coat—1 Back bodice, 2 Facing, 3 Collar
- <T> Pleated Coat Dress—1 Back bodice, 2 Facing, 3 Top collar, 4 Under collar
- <S> Raincoat—1 Back bodice, 2 Hood, 3 Facing, 4 Tab, 5 Belt, 6 Leash opening
- <W> Bandana—1 Bandana
- <Y> Bandana with Floppy Ears—1 Hood (sides), 2 Hood (center), 3 Ear

- The templates do not include seam allowances. Please refer to P.54 and the cutting diagrams that are part of the instructions for seam allowance information.
- The templates include 14 sizes from XXS-RL (for projects like hats, the included size range will be between 3 and 5). For sizing information, please refer to P.36.

© Toshio Kaneko/NIHON VOGUE-SHA 2018 | Original Japanese edition published in 2018 by Nihon-Vogue Corp., Japan.  
English Translation © 2021 Periplus Editions (HK) Ltd. | Printed in Malaysia 2101VP

<S>-1  
Back bodice  
(Sizes XXS~XL)

<T>-4  
Under collar  
(Sizes XXS~XL)

TXL

RL

RM

<O>-3  
Collar  
(Sizes SM/SL/RM/RL)

Center back fold  
RM

SM  
SL

XS

XXS

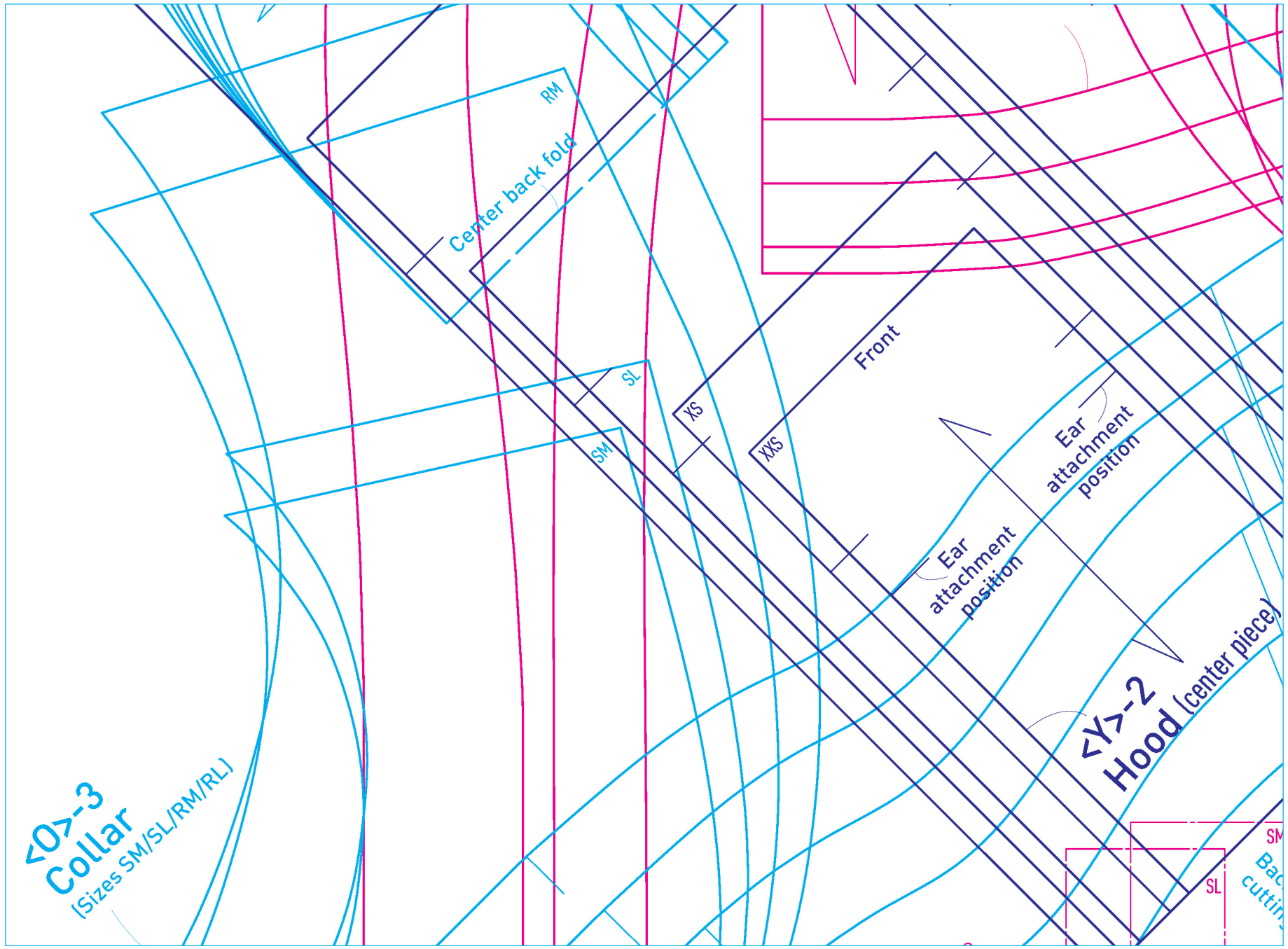
Front

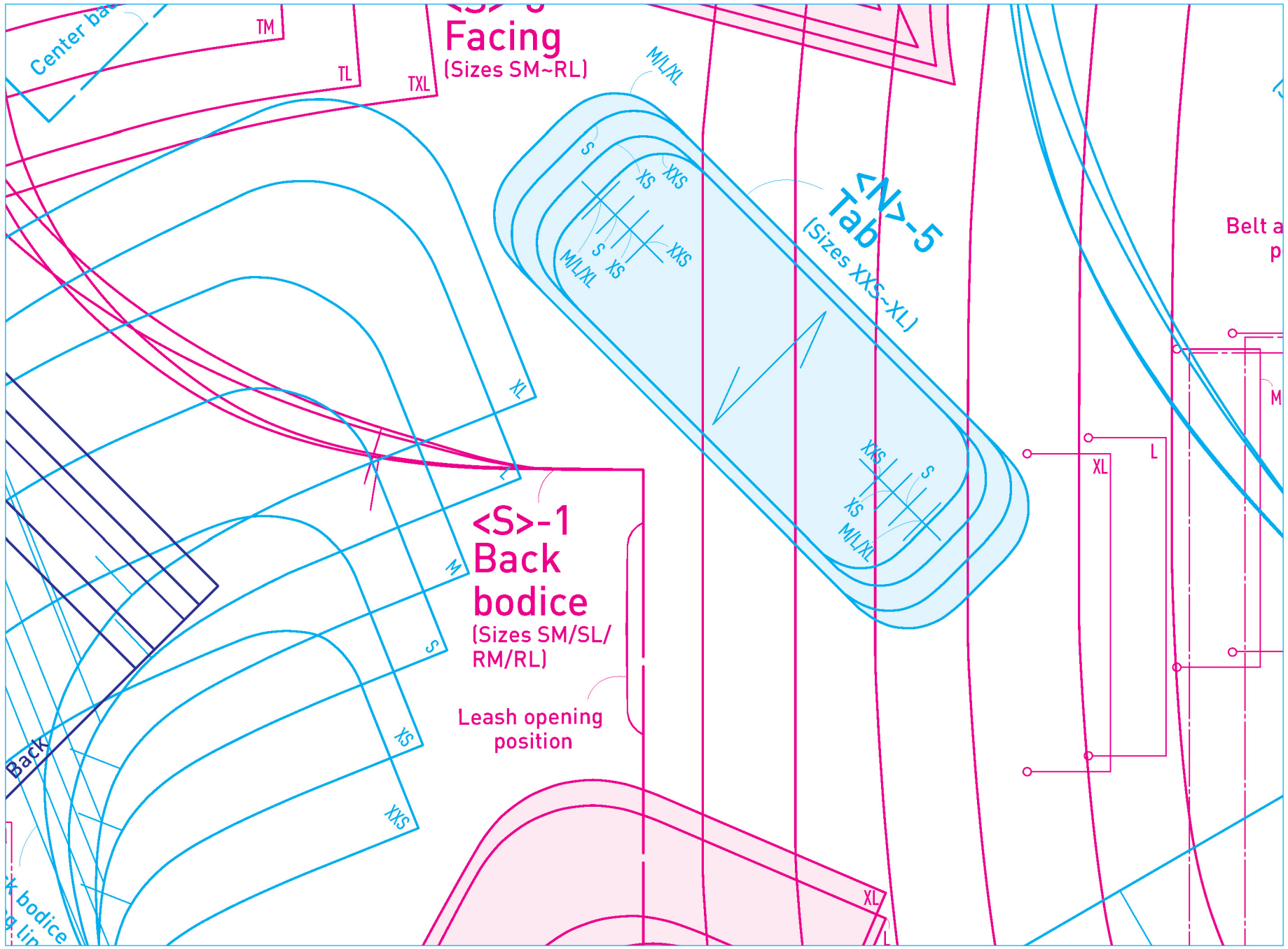
Ear  
attachment  
position

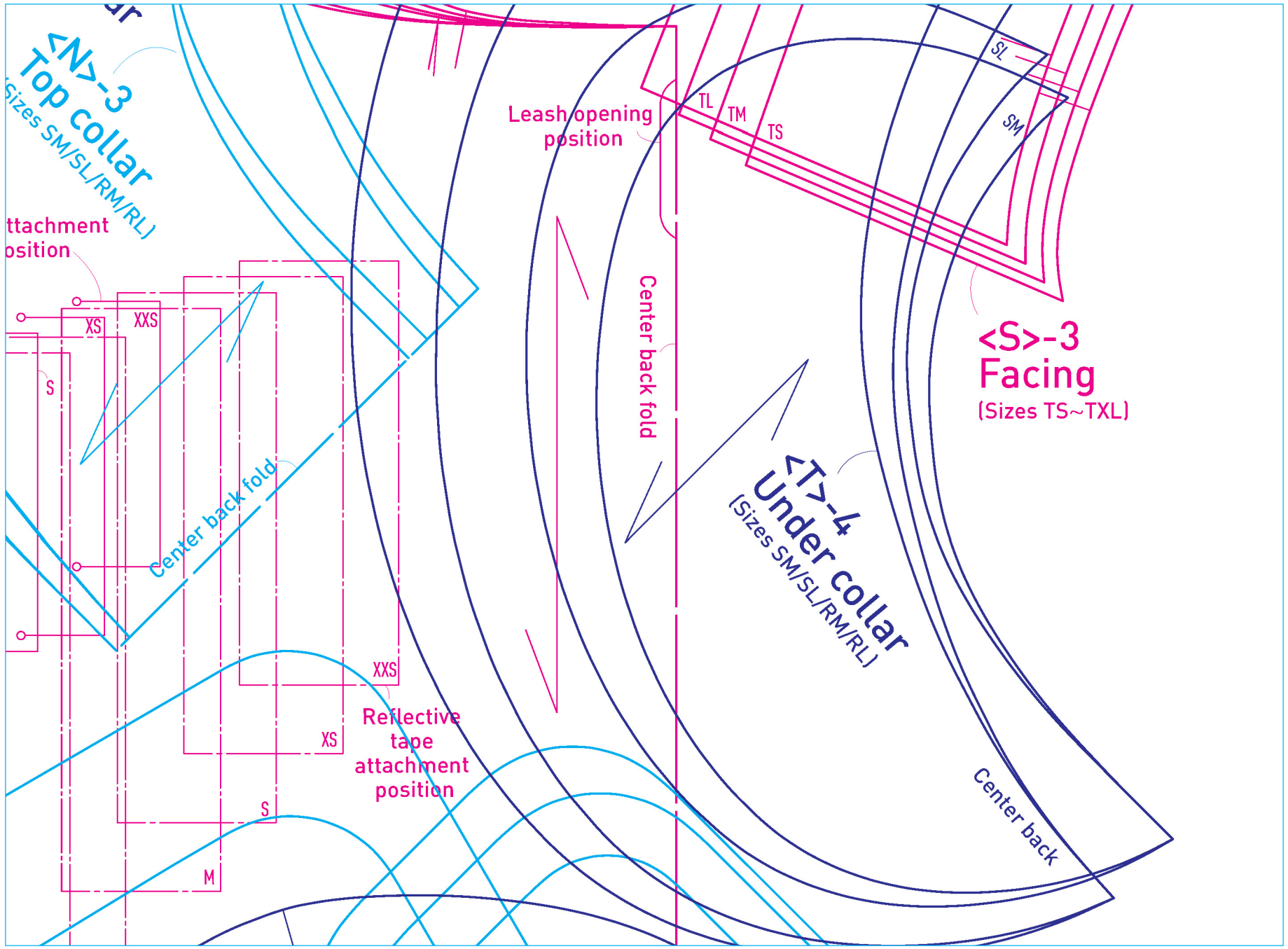
Ear  
attachment  
position

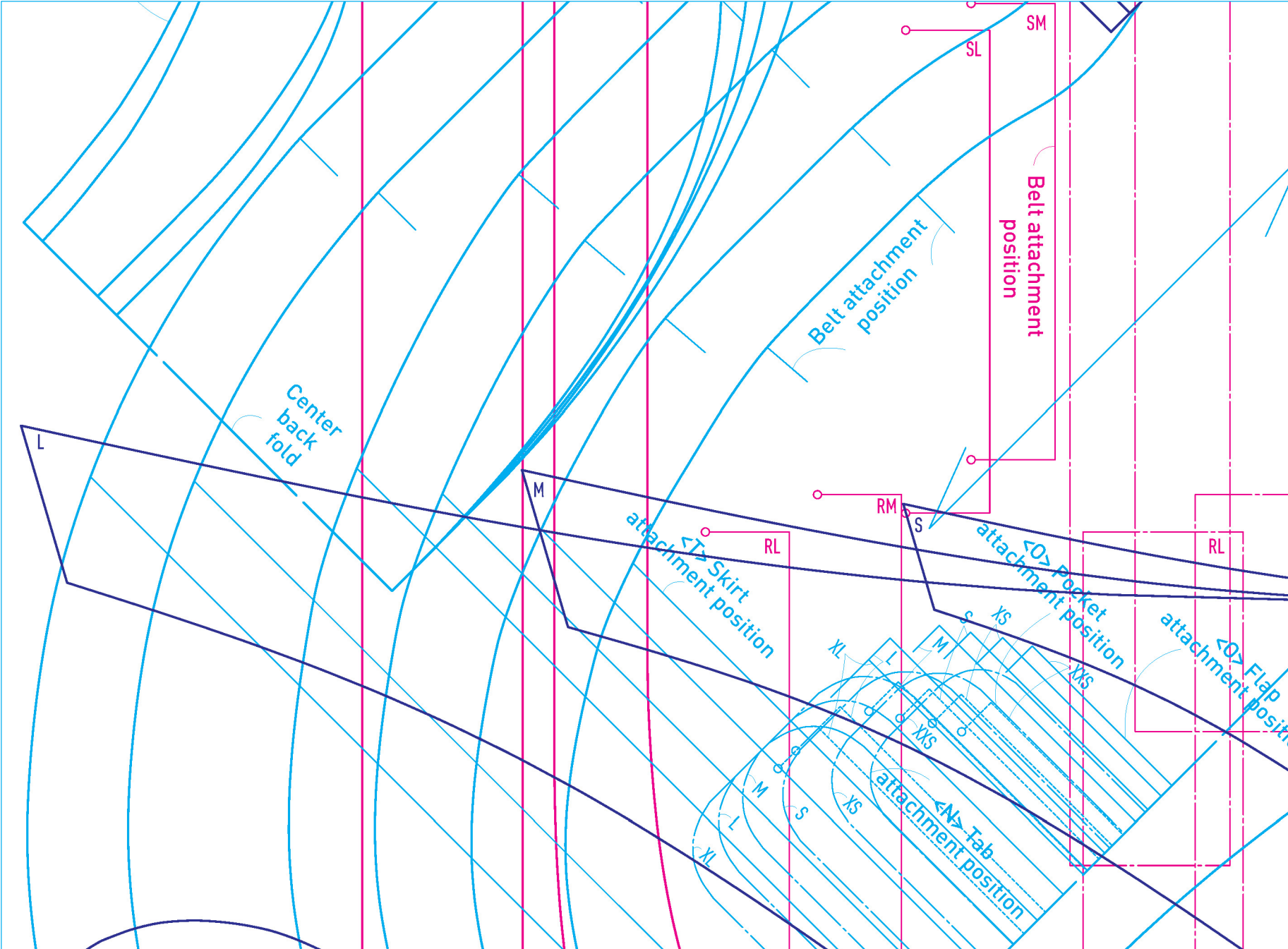
<Y>-2  
Hood (center piece)

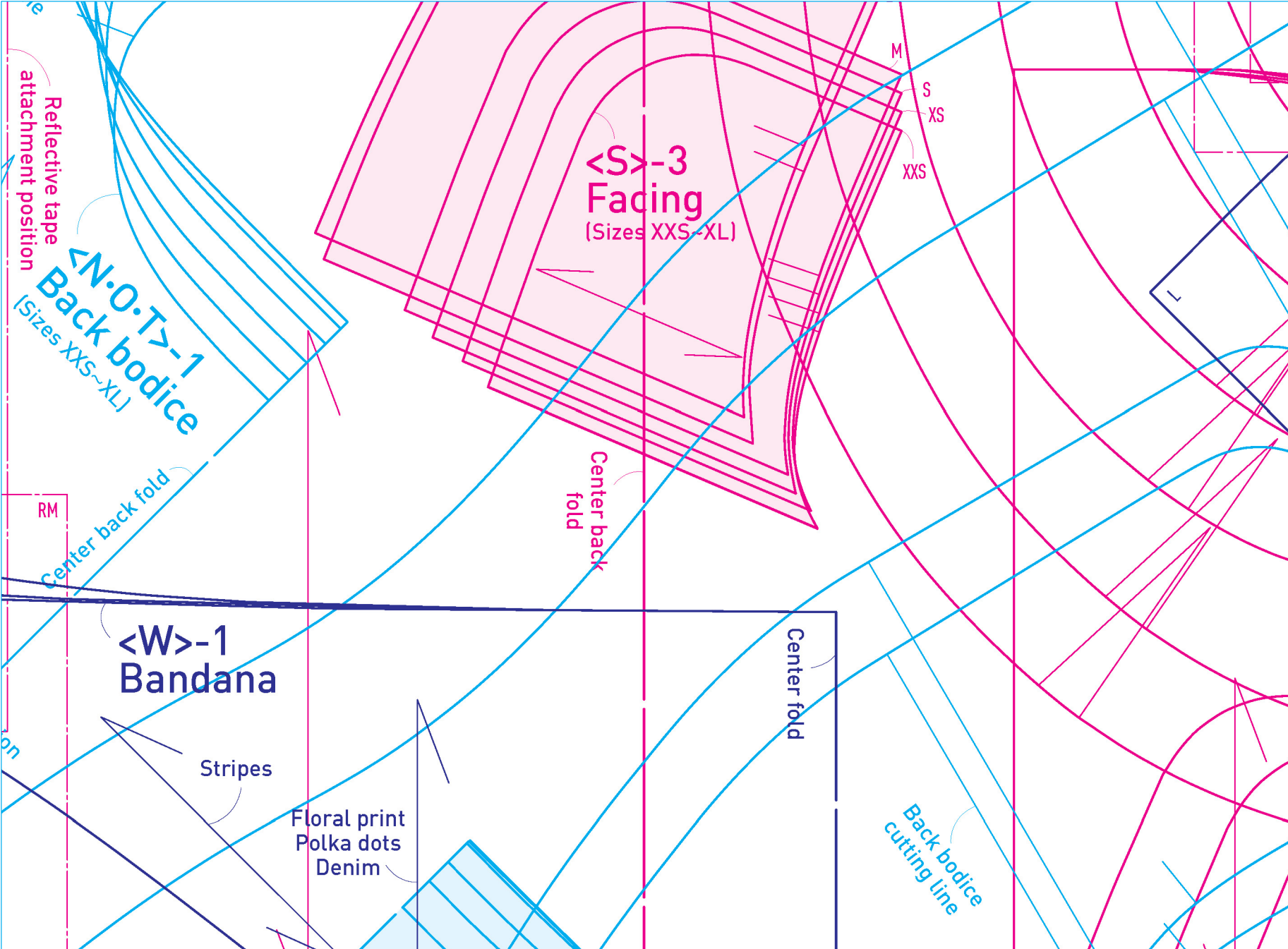
SM  
SL  
Back  
cutting



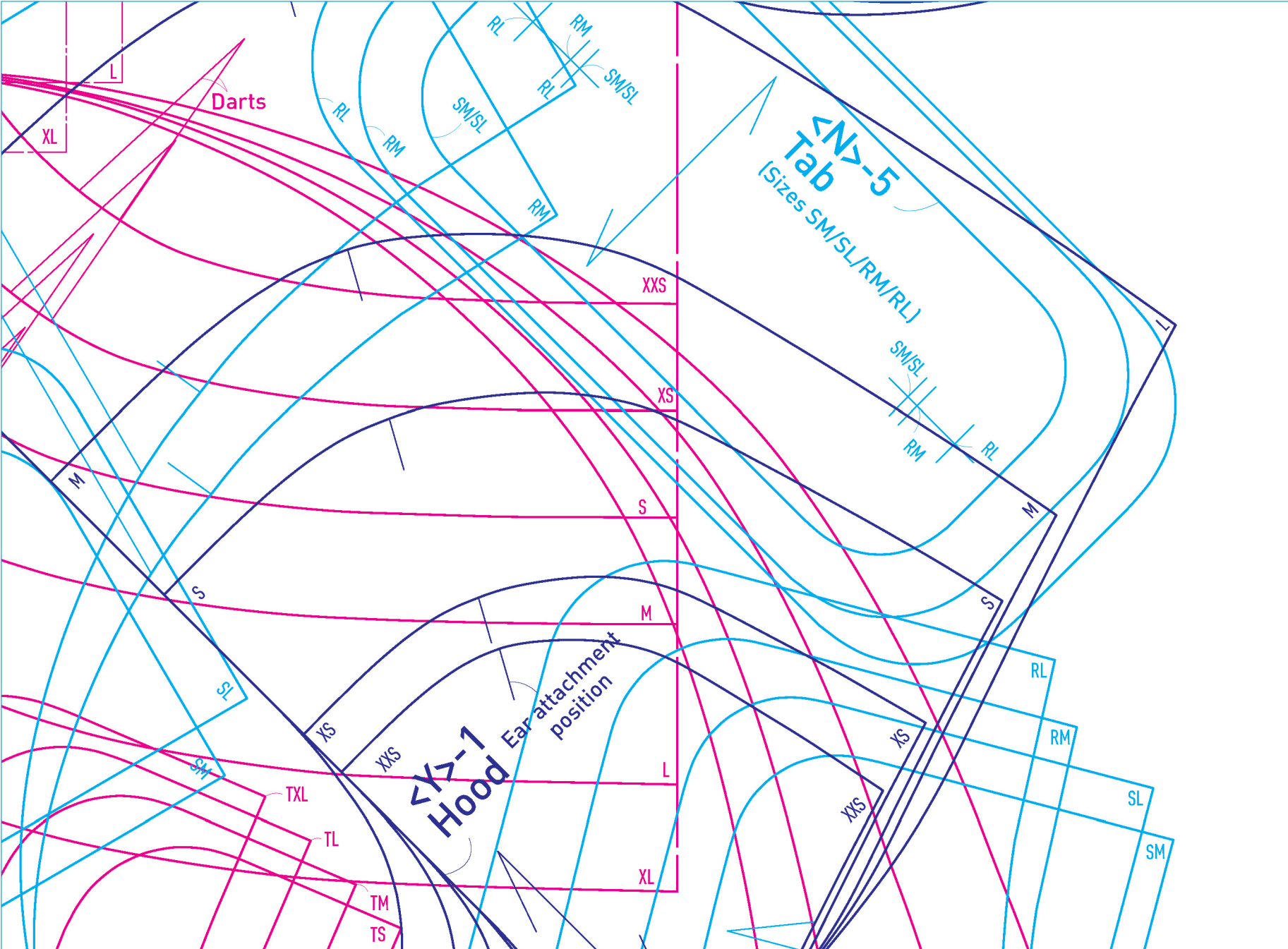


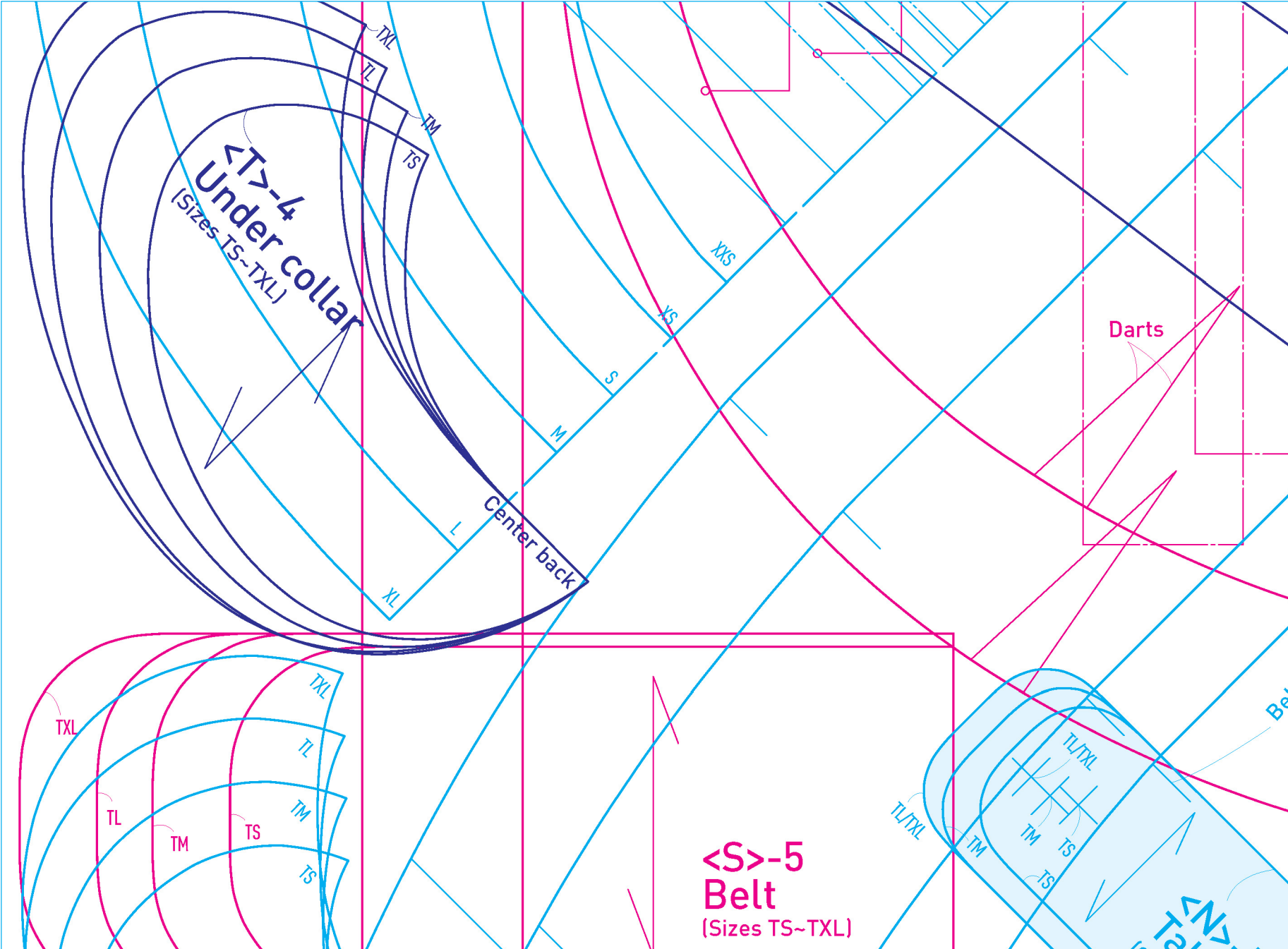


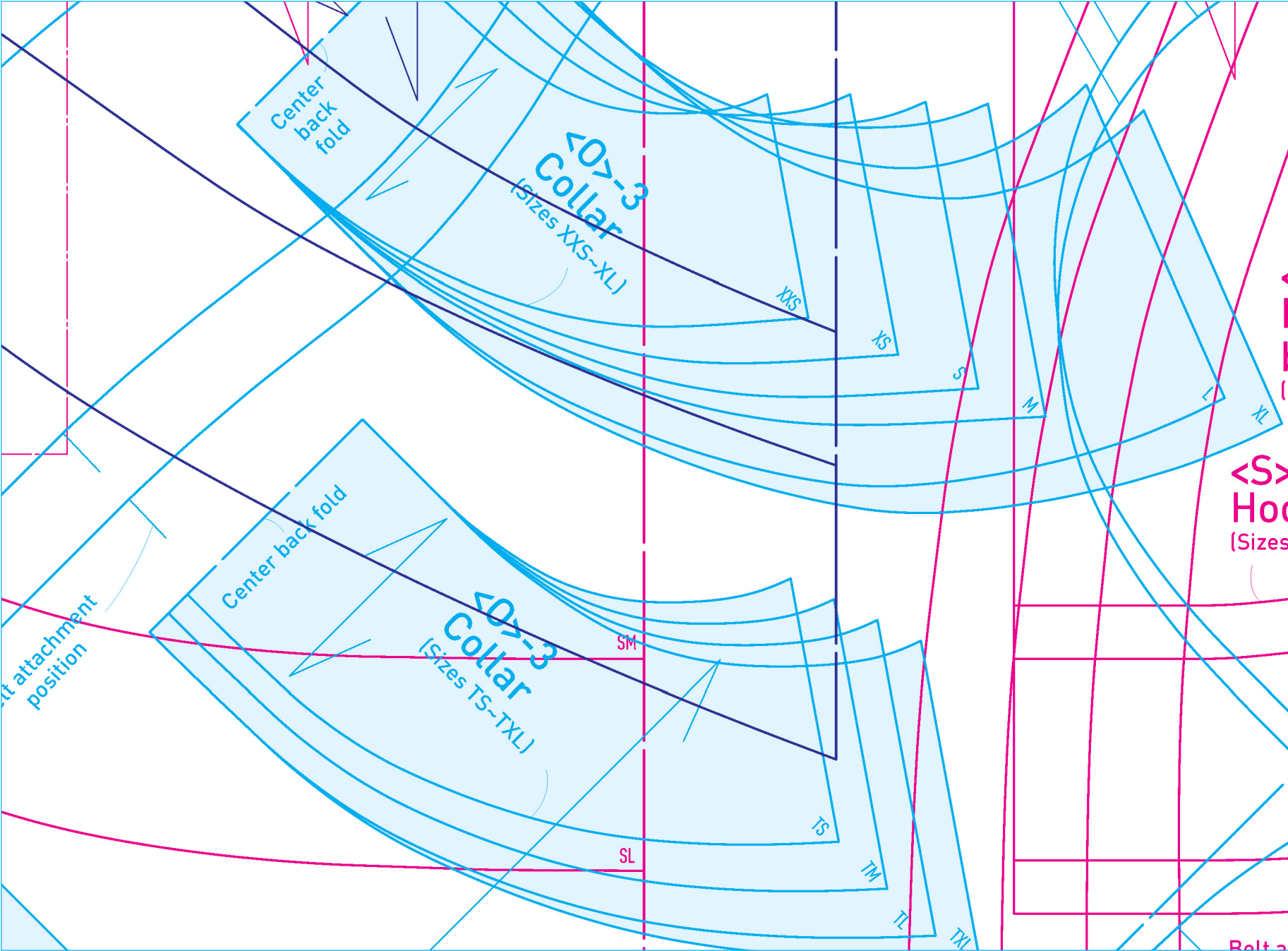


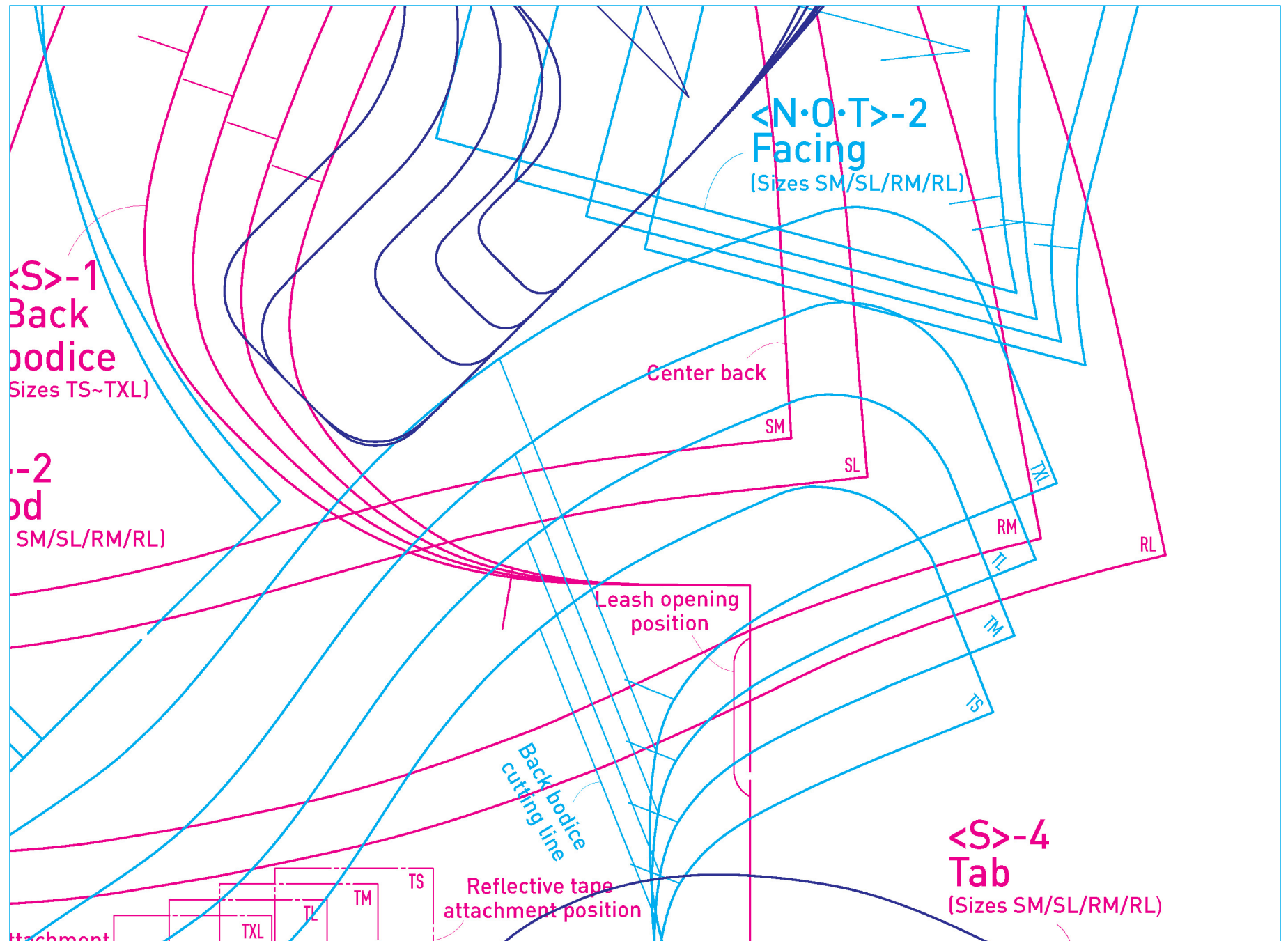


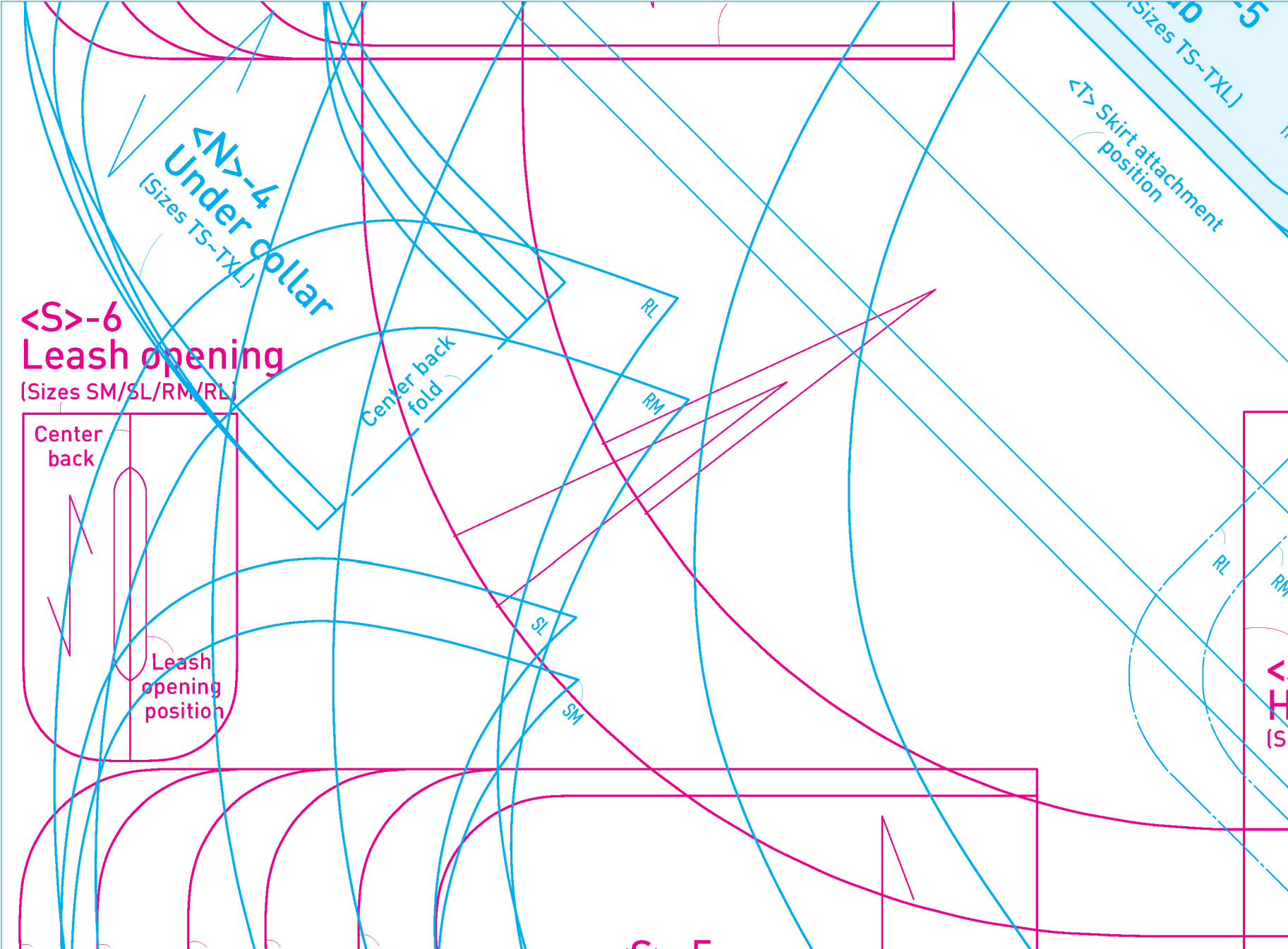


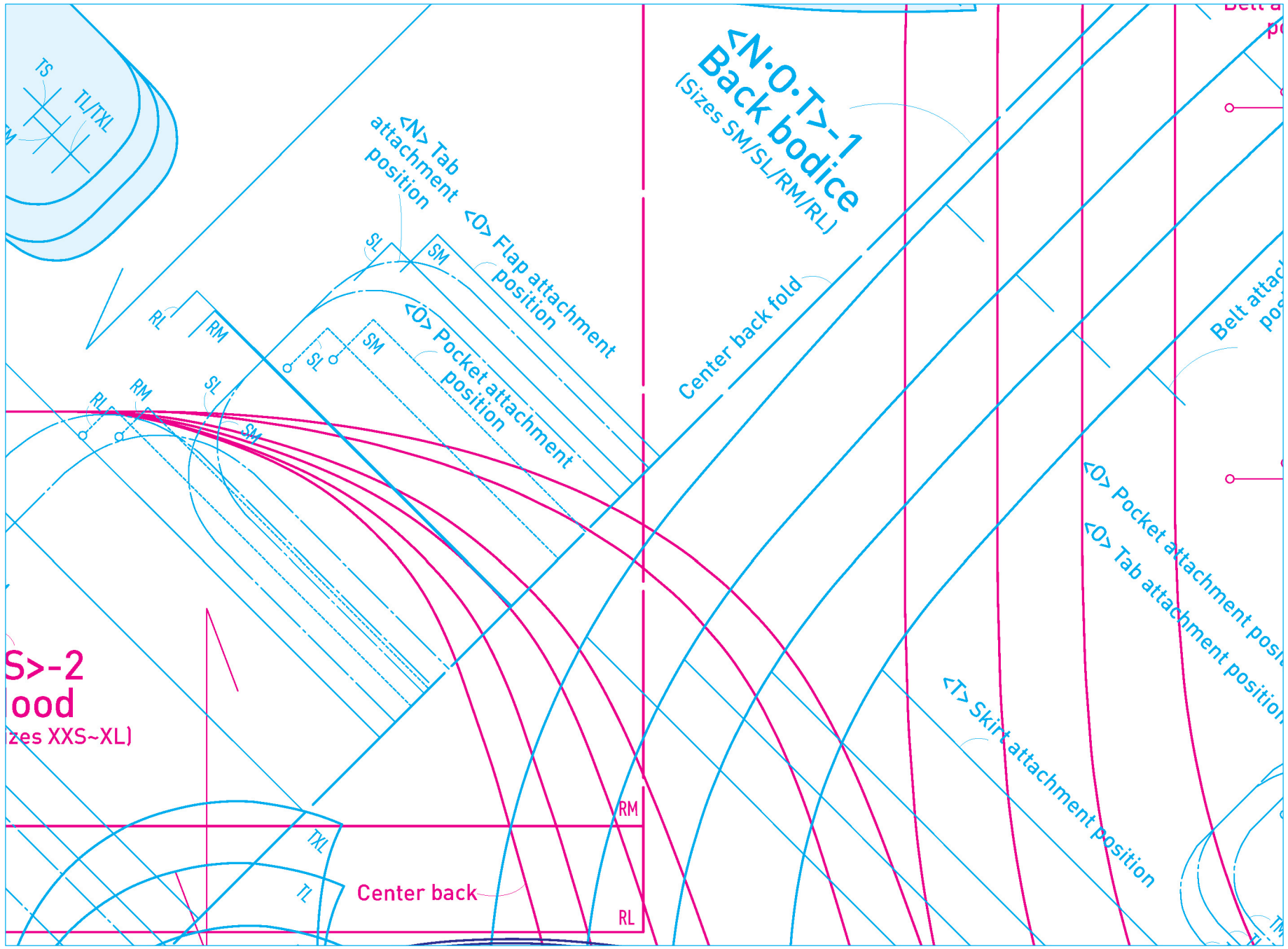












# <N.O.T>-1 Back bodice (Sizes SM/SL/RM/RL)

**S>-2**  
**ood**  
(Sizes XXS~XL)

Center back

Center back fold

Belt attachment position

Belt attachment position

<O> Pocket attachment position  
<O> Tab attachment position

<T> Skirt attachment position

RM

RL

TXL

TL

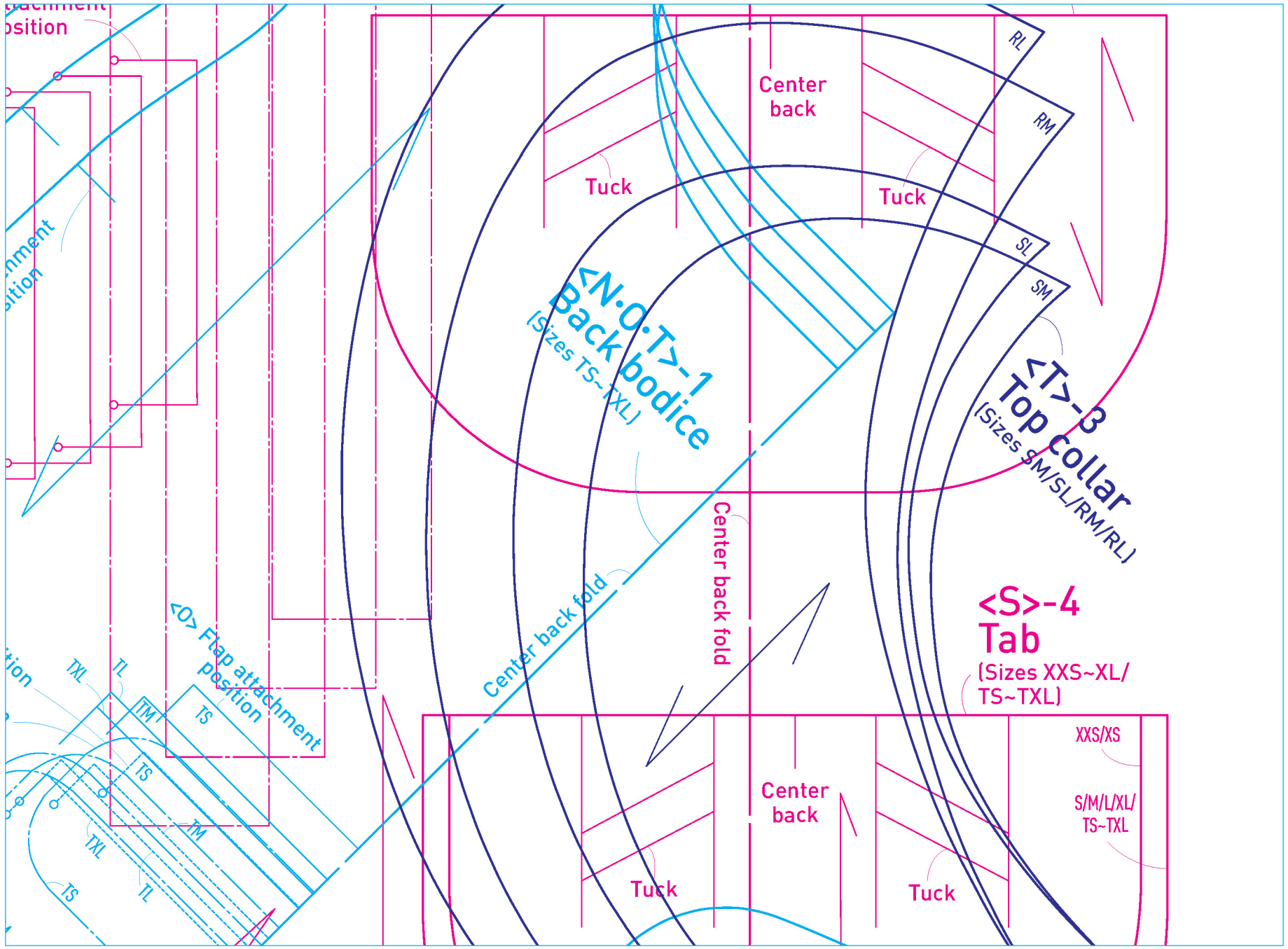
<N> Tab attachment position  
<O> Flap attachment position

<O> Pocket attachment position

SL SM

RL RM

RL RM SL SM



Attachment position

Attachment position

Attachment position

<O> Flap attachment position

<N.O.T>-1  
Back bodice  
(Sizes TS~XXL)

<T>-3  
Top collar  
(Sizes SM/SL/RM/RL)

<S>-4  
Tab  
(Sizes XXS~XL/  
TS~TXL)

Center back fold

Center back fold

Center back

Tuck

Tuck

Center back

Tuck

Tuck

XXS/XS

S/M/L/XL/  
TS~TXL

RL

RM

SL

SM

TXL

TL

TM

TS

TXL

TL

TM

TS

